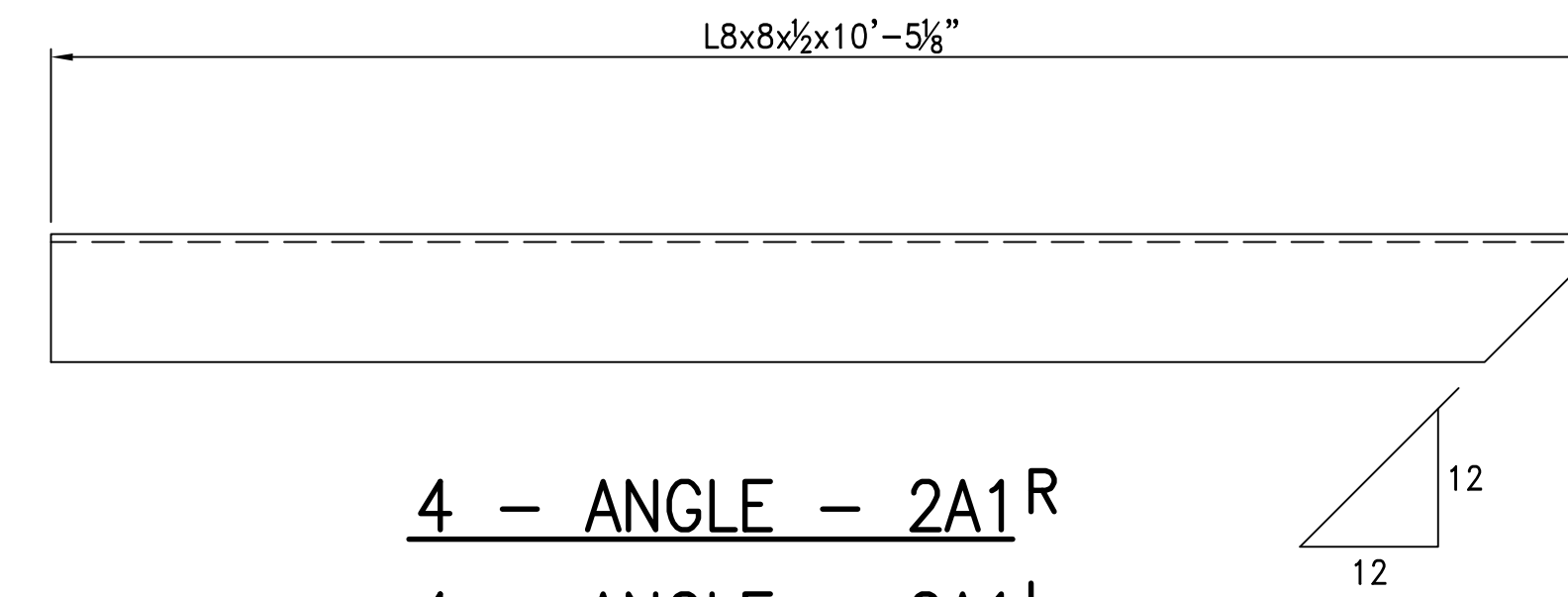
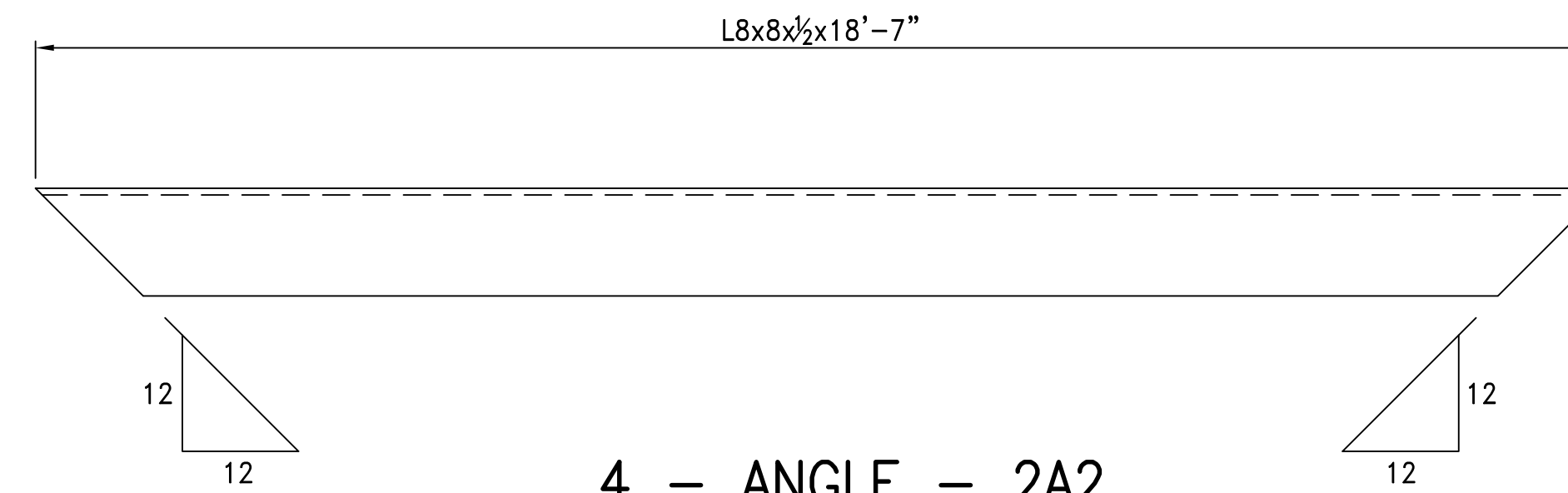


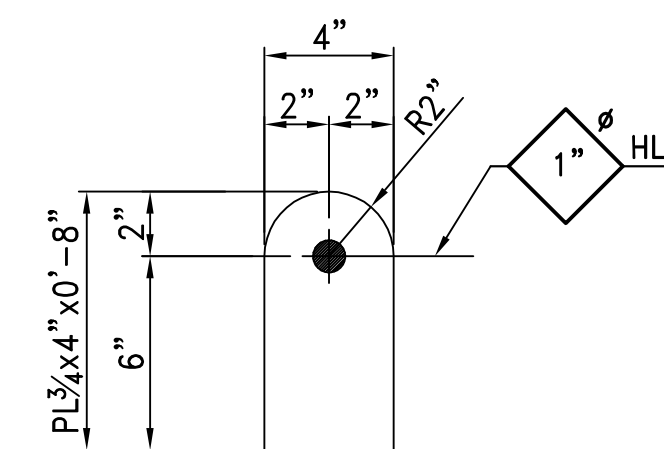
4 - PLATE - 2PL1



4 - ANGLE - 2A1R
4 - ANGLE - 2A1L



4 - ANGLE - 2A2



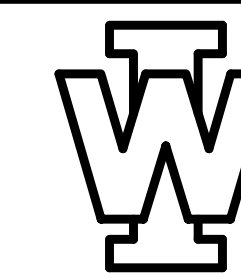
32 - LIFTING LUG - 2M1

PAINT NOTE:
 SHOP PRIME & PAINT YELLOW ENAMEL

W BILL OF MATERIAL

NO REQ'D	MARK NO	DESCRIPTION	LENGTH		REMARKS	SAW CUT
			FT	IN		
4	2PL1	PLATE				
4		PL 1/4 x 124 1/4	18	5		
4/4	2A1 R/L	ANGLE				
8		L8 x 8 x 1/2	10	5 3/8		
4	2A2	ANGLE				
4		L8 x 8 x 1/2	18	7		
32	2M1	LIFTING LUG				
32		PL 3/4 x 4	0	8		
PLAIN MATERIAL (No Sketch)						
4	2B1	W14 x 90	12	11 1/2		
32	2A3	L8 x 4 x 1/2	4	1	SHOP FIT-UP	

FOR APPROVAL ONLY
 DATE: 04-13-11



WILSON IRON WORKS, INC.
 1150 EAST SUMMIT ST.
 CROWN POINT, IN
 (219) 663-7900 - 769-8686

REV	DESCRIPTION	DATE	PROJECT	JOB NO.	DRAWN BY	DATE	CHECK'D BY	DRAWING NO.
4			ArcelorMittal USA - BURNS HARBOR CASTER No. 2 TUNDISH PIT COVER SHOP DWGS. G.C. ArcelorMittal USA	S11022	RAV	04/07/11		2
3								
2								
1								
SHOP NOTES			MAT'L A36 U.N. OPEN HLS. 1 3/16" Ø U.N. WELDING E70XX PAINT SEE NOTE					