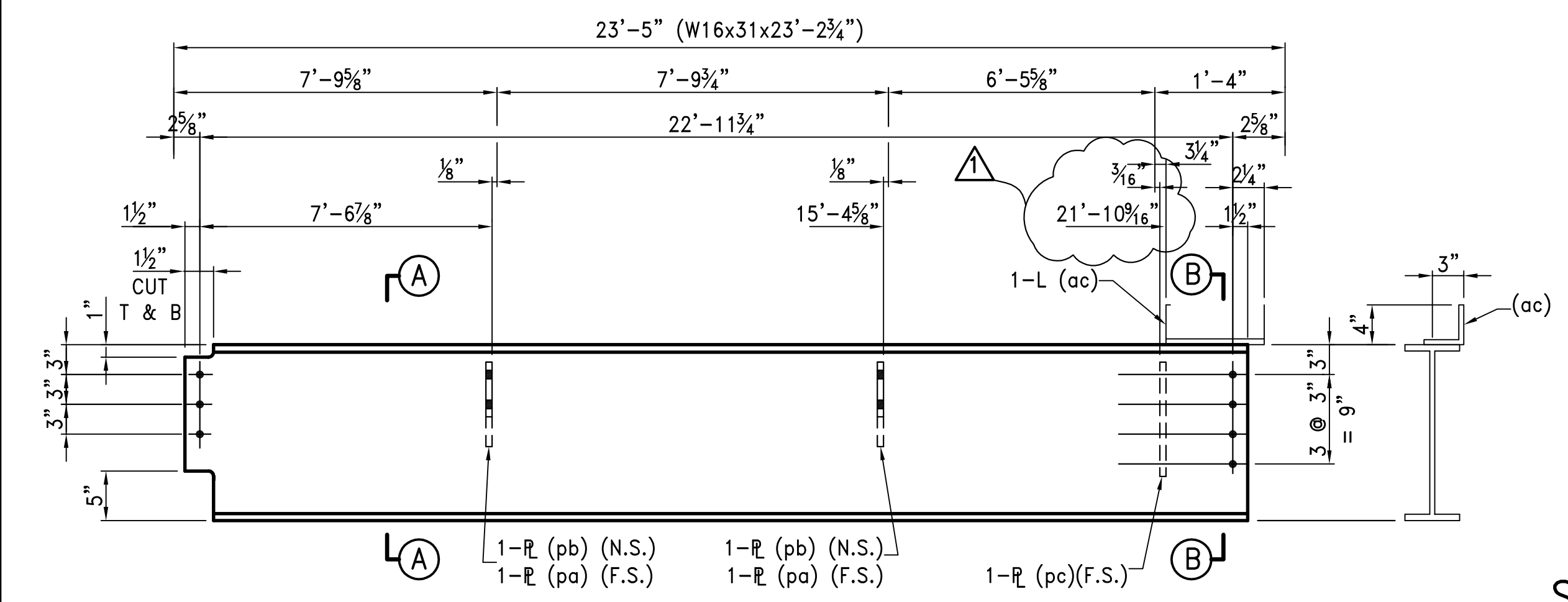
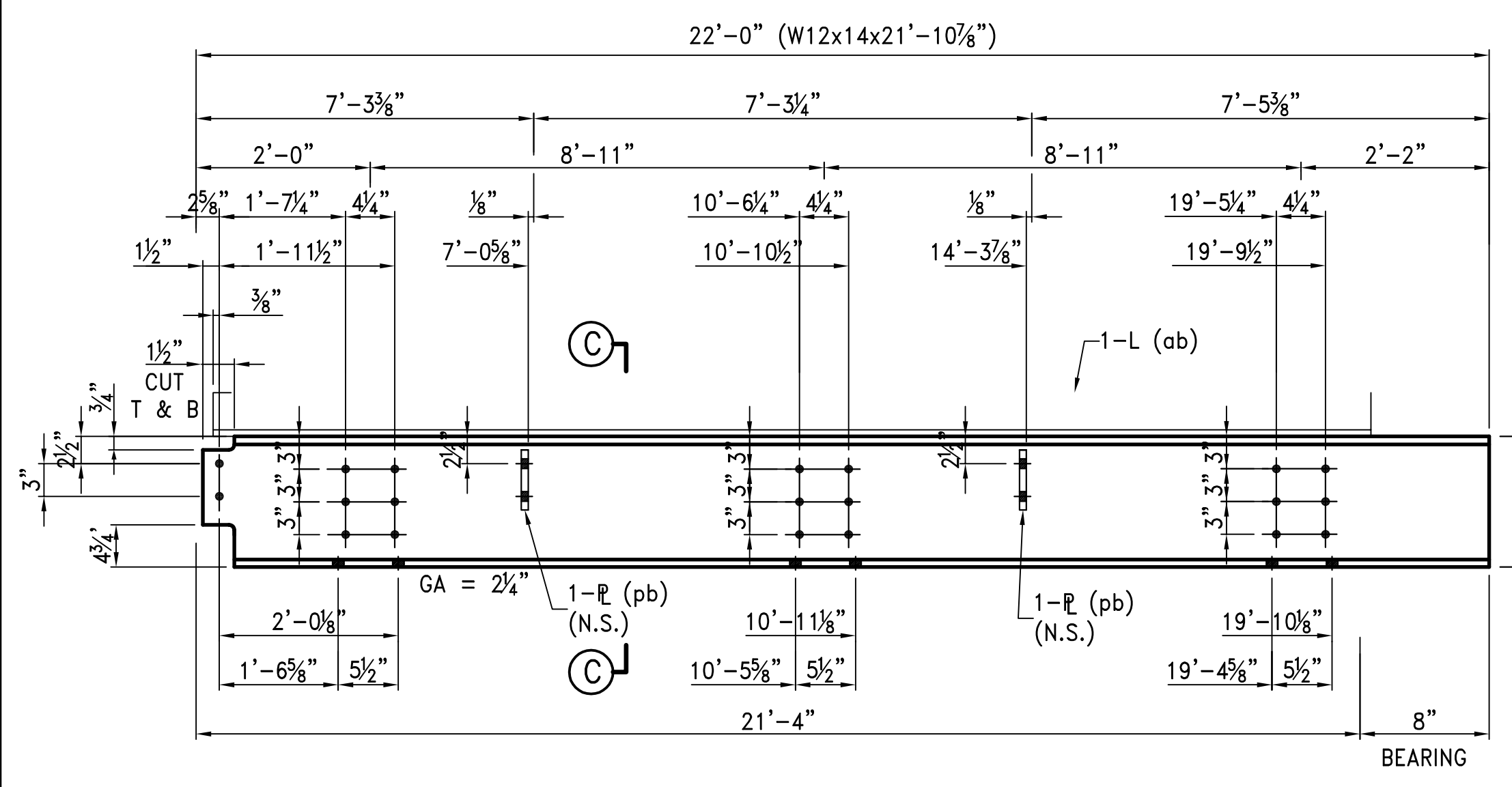


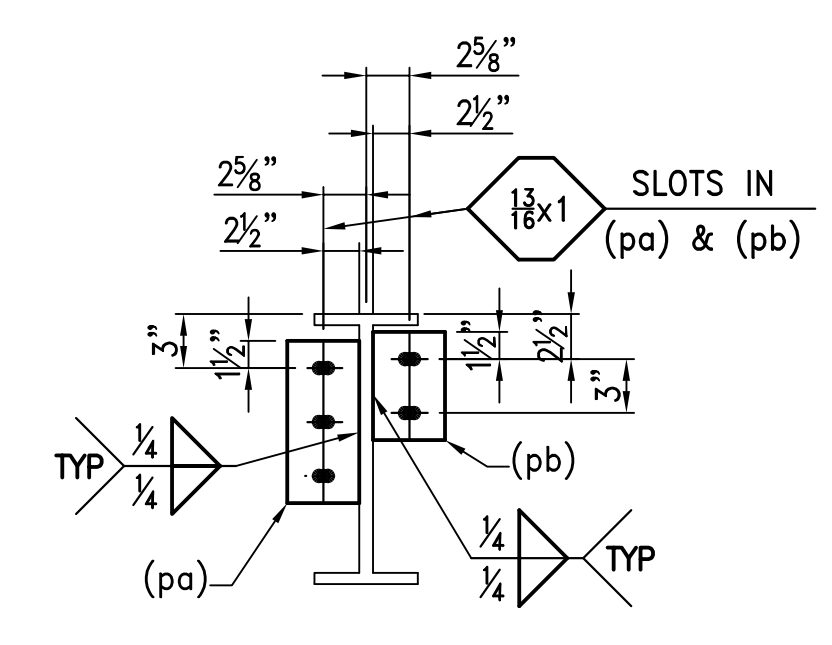
ONE - BEAM - 7B1A (AS SHOWN)
ONE - BEAM - 7B8A (OPP. HAND)



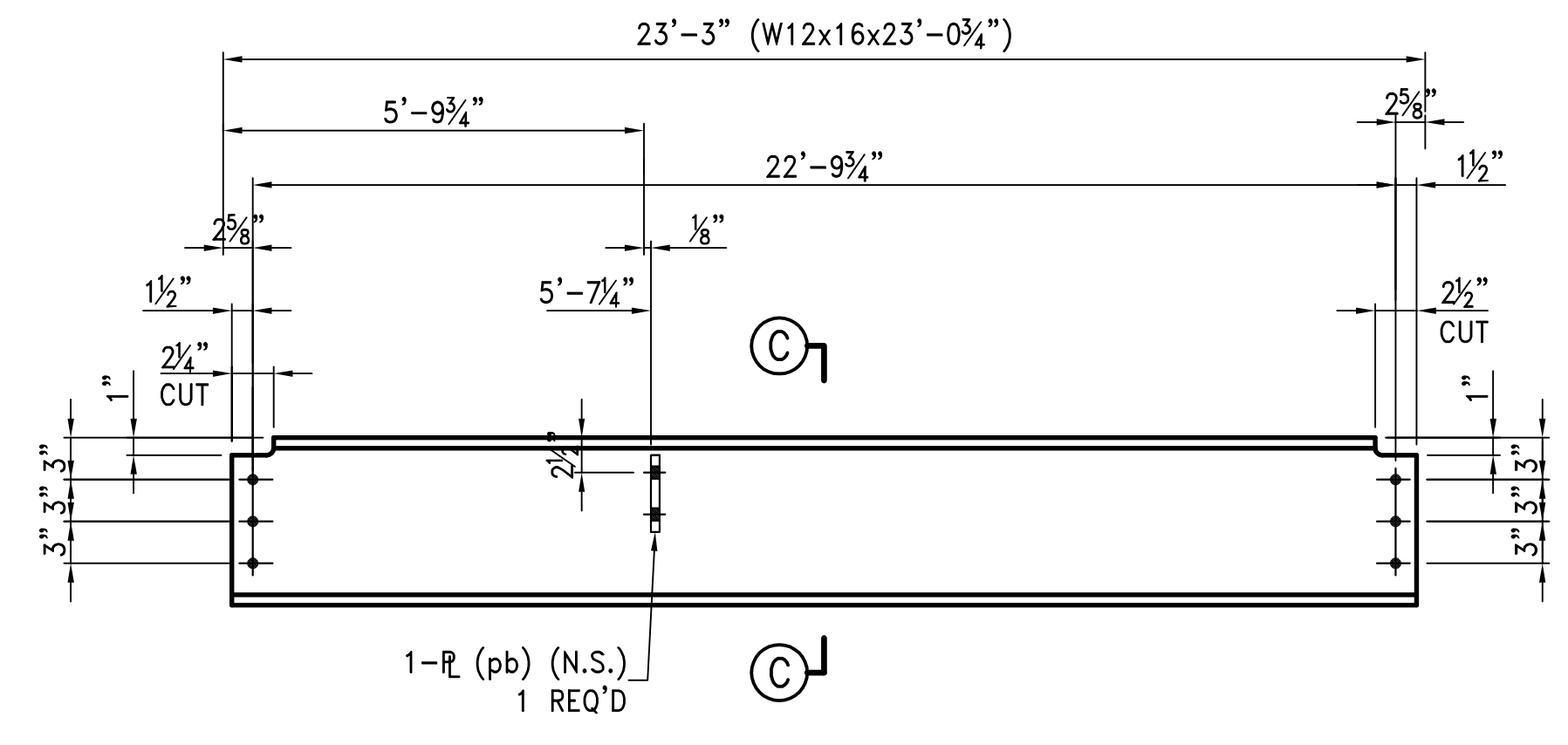
ONE - BEAM - 7B2A



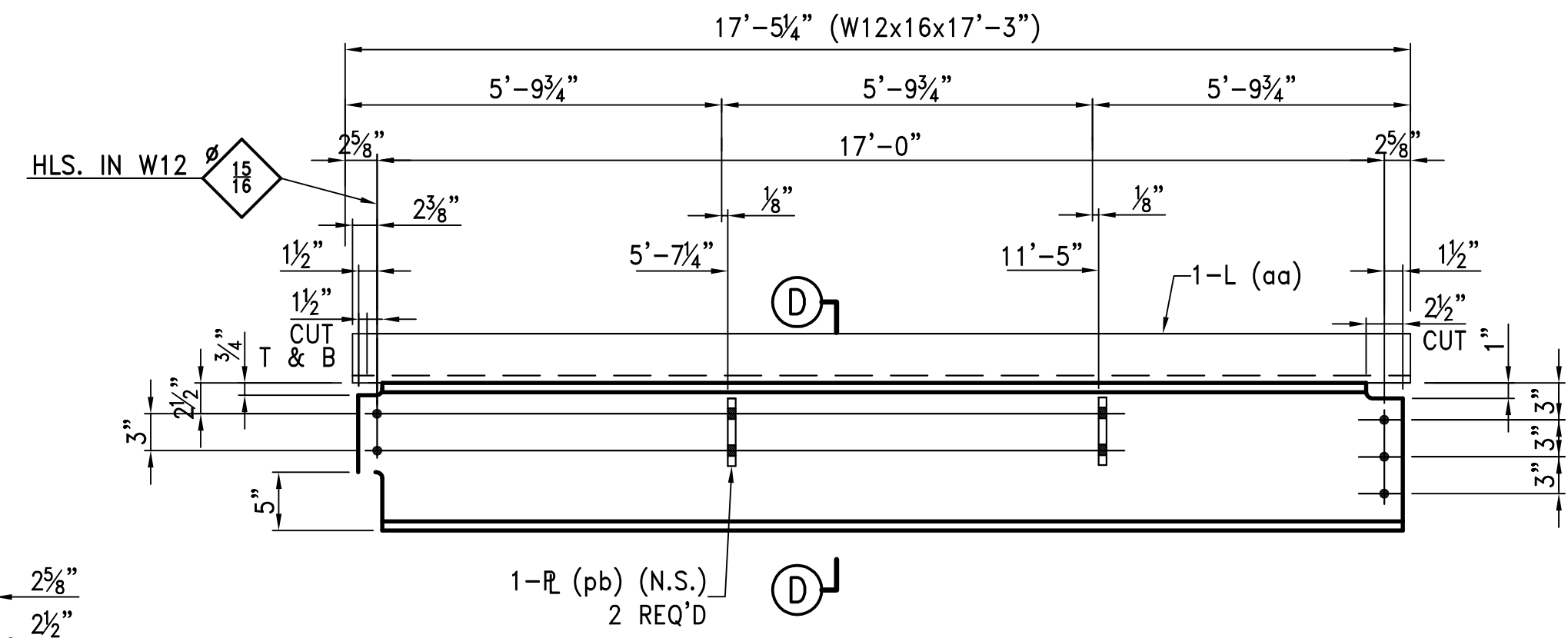
ONE - BEAM - 7B3A



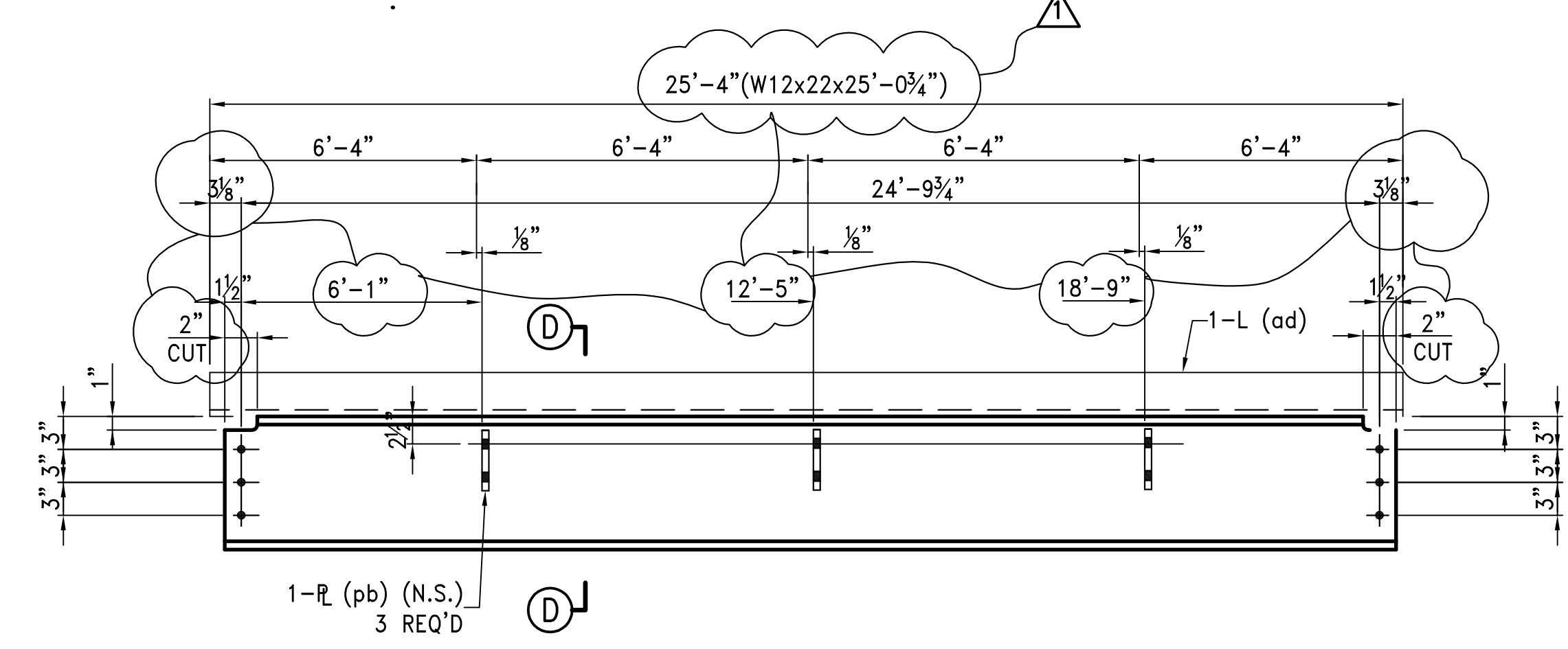
SECTION A-A



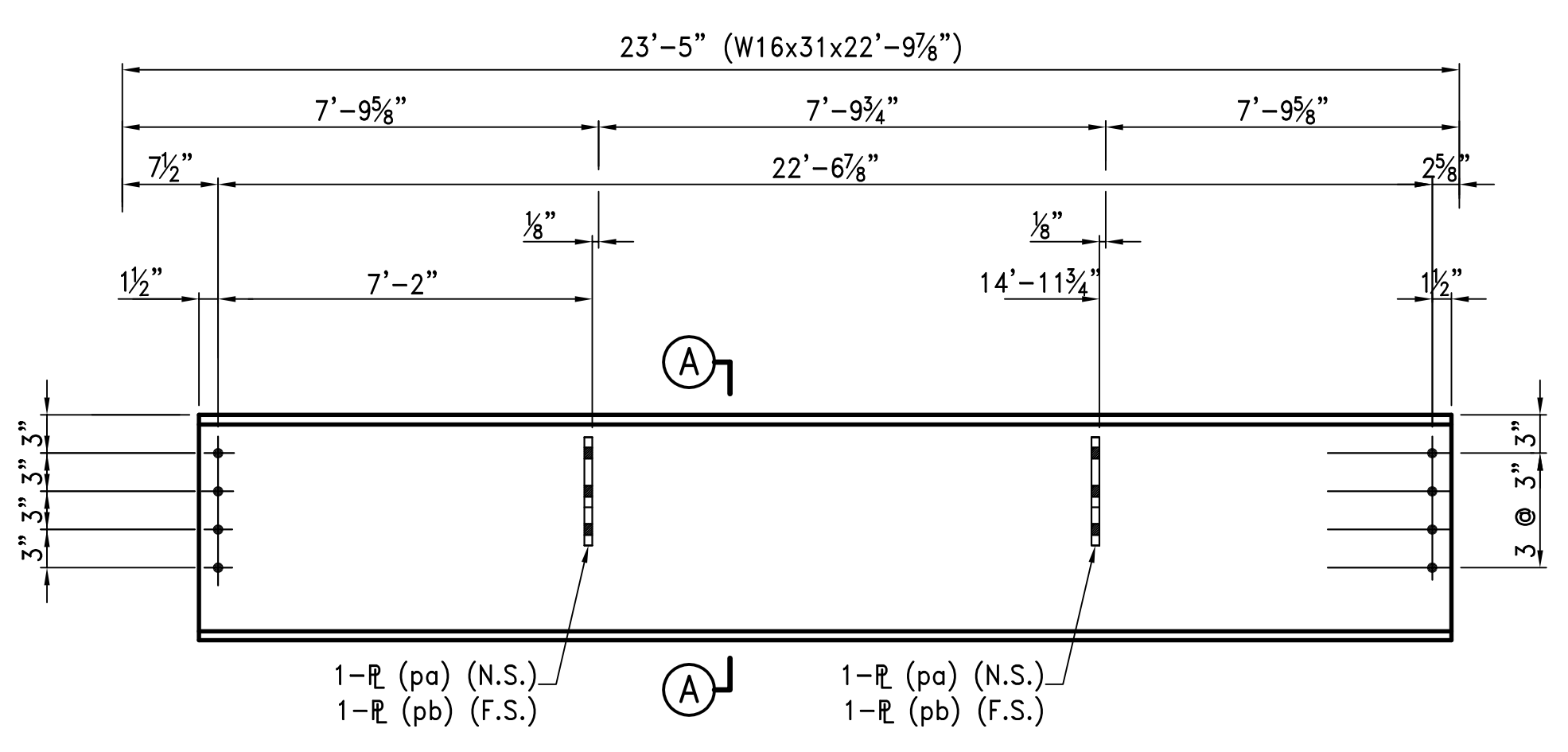
ONE - BEAM - 7B4AR
ONE - BEAM - 7B4AL



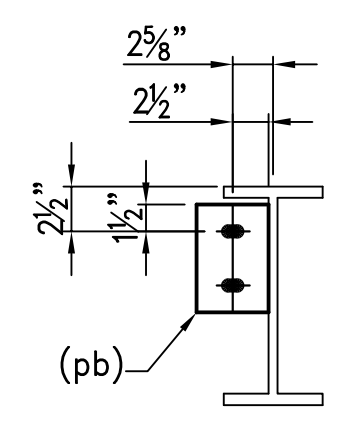
ONE - BEAM - 7B5AR
ONE - BEAM - 7B5AL



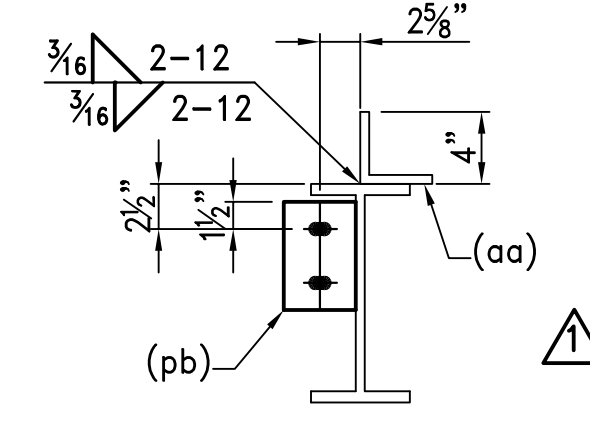
ONE - BEAM - 7B6A



ONE - BEAM - 7B7A



SECTION C-C



SECTION D-D

W BILL OF MATERIAL

NO REQ'D	MARK NO	DESCRIPTION	LENGTH		REMARKS	SAW CUT
			FT	IN		
ONE	7B1A	BEAM				
1		W16 x 31	16	4 1/2	A992 GR 50	
2	pa	R 3/8 x 4	0	9		
2	pb	R 3/8 x 4	0	6		
ONE	7B2A	BEAM				
1		W16 x 31	23	2 3/4	A992 GR 50	
2	pa	R				
2	pb	R				
1	pc	R 3/8 x 4	1	0		
1	ac	L 4 x 3 x 1/4	1	0 3/8		
ONE	7B3A	BEAM				
1		W12 x 14	21	10 7/8	A992 GR 50	
2	pb	R				
1	ab	L 4 x 3 x 1/4	21	1 3/4		
2	7B4A R/L	BEAM				
2		W12 x 16	23	0 3/4	A992 GR 50	
2	pb	R				
2	7B5A R/L	BEAM				
2		W12 x 16	17	3	A992 GR 50	
4	pb	R				
2	aa	L 4 x 3 x 1/4	17	5		
ONE	7B6A	BEAM				
1		W12 x 22	25	0 3/4	A992 GR 50	
3	pb	R				
1	ad	L 4 x 3 x 1/4	25	4		
ONE	7B7A	BEAM				
1		W16 x 31	22	9 7/8	A992 GR 50	
2	pa	R				
2	pb	R				
ONE	7B8A	BEAM				
1		W16 x 31	16	4 1/2	A992 GR 50	
2	pa	R				
2	pb	R				

FIELD BOLTS:
88 - 3/4" x 2" A325 BOLTS w/H.H. NUT & WASH.

REF. DWG. E1

WILSON IRON WORKS, INC.
1150 EAST SUMMIT ST.
CROWN POINT, IN
(219) 663-7900 - 769-8686

SHOP NOTES
MATL A36 U.N.
OPEN HLS. 13/16" U.N.
WELDING E70XX
PAINT NO PAINT

PROJECT CENTER BANK NEW CORPORATE OFFICE BLDG. MERRILLVILLE, IN
G.C. BERGLUND CONSTRUCTION
JOB NO. S07001
DRAWN BY RAV
DATE 01/22/07
CHK'D BY CS

DRAWING NO. 7

4			
3			
2			
1	REV. 7B1, 7B2, 7B6 & 7B8	3/29/07	
REV	DESCRIPTION	DATE	