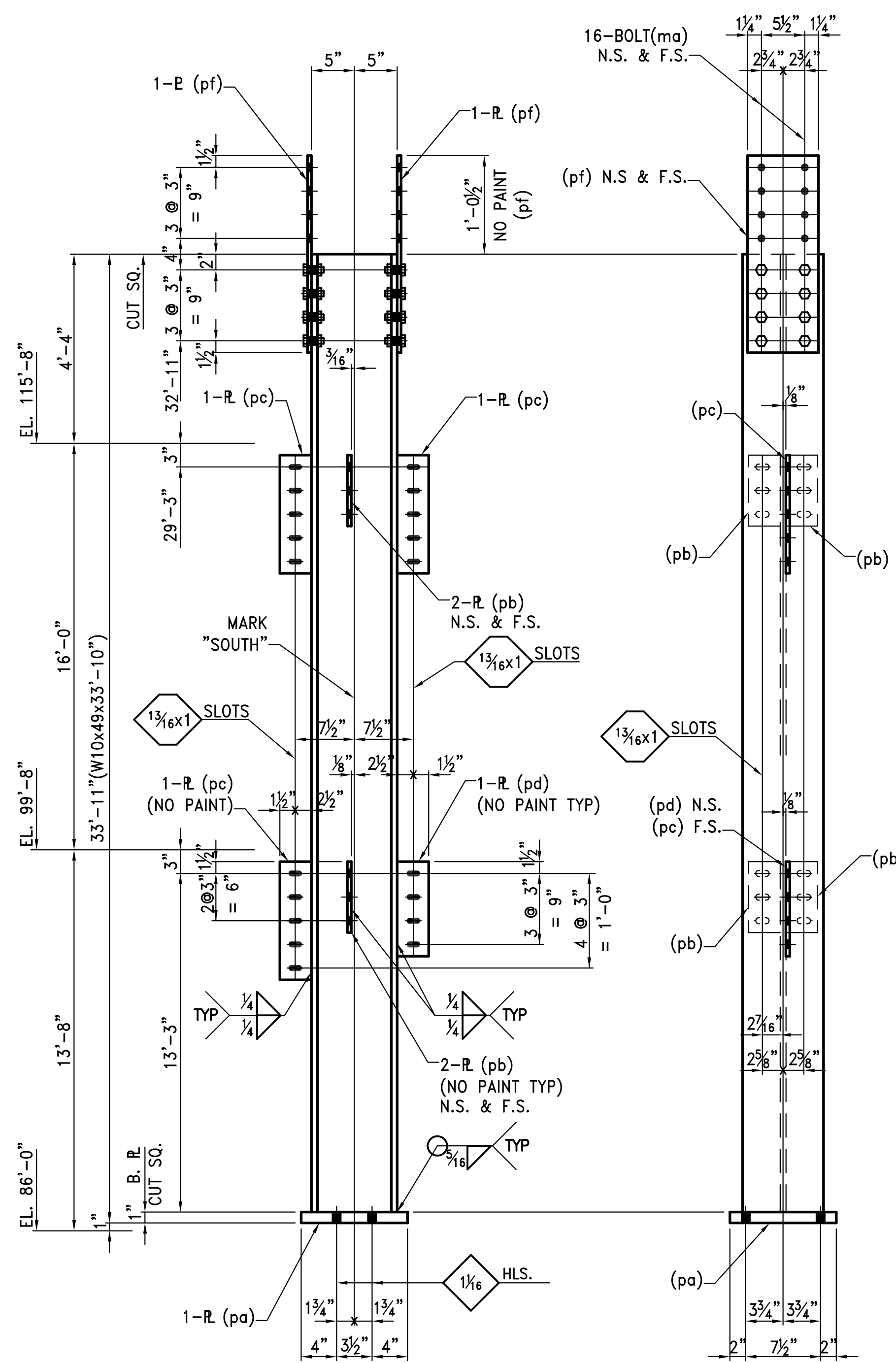


**W** BILL OF MATERIAL

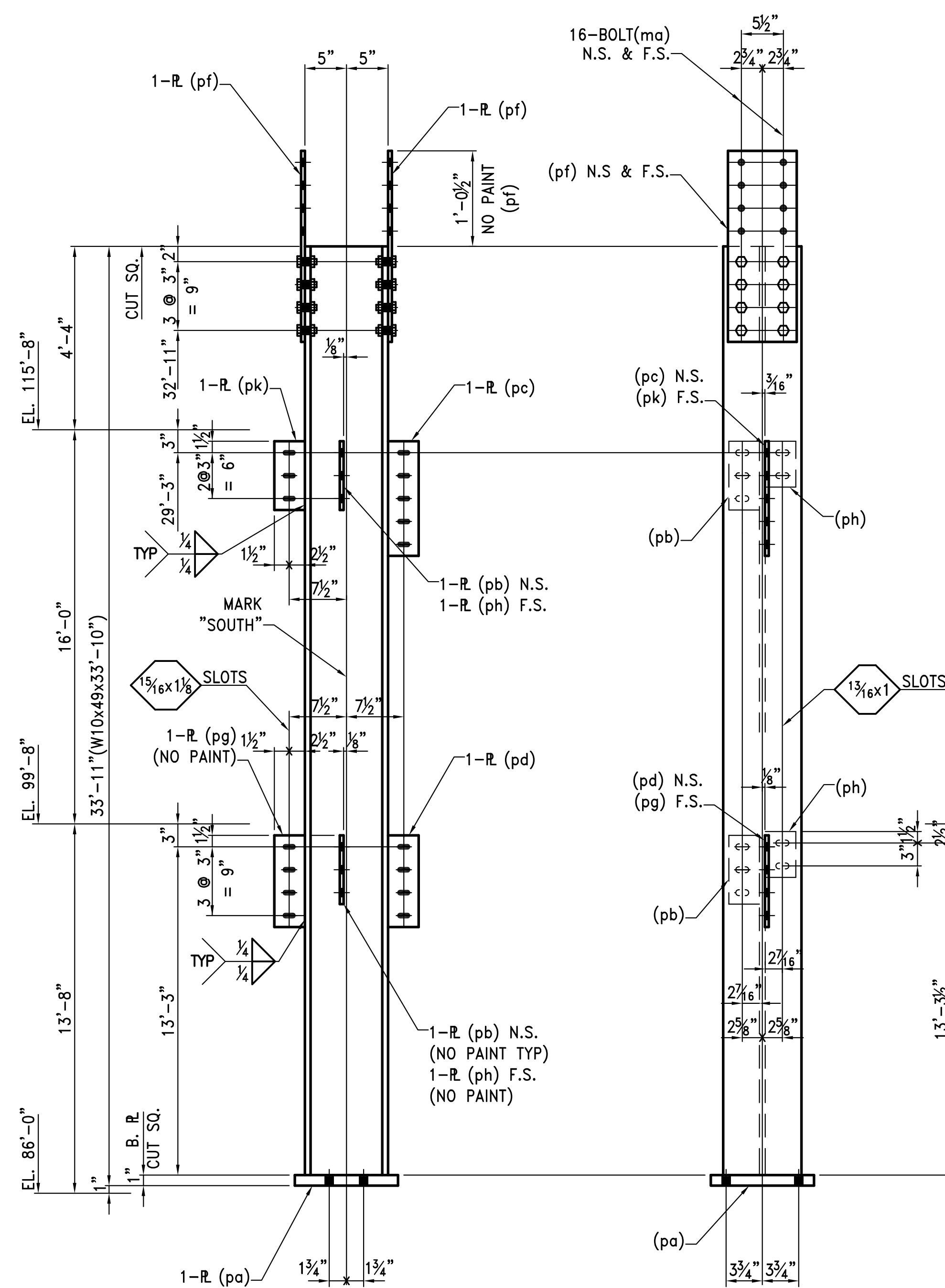
NO REQ'D	MARK NO	DESCRIPTION	LENGTH		REMARKS	SAW CUT
			FT	IN		
2	6C1A	COLUMN				
2		W10x49	33	10	A992 GR 50 SQ2E	
2	pa	R 1 x 11 1/2	0	11 1/2		
8	pb	R 3/8 x 4	0	9		
6	pc	R 3/8 x 4	1	3		
2	pd	R 3/8 x 4	1	0		
4	pf	R 1/2 x 8	2	1		
32	ma	3/4" x 2 1/4" A325 BOLT				
		w/HH NUT & WA				
ONE	6C2A	COLUMN				
1		W10x49	33	10	A992 GR 50 SQ2E	
1	pa	R				
2	pb	R				
1	pc	R				
1	pd	R				
2	pf	R				
1	pg	R 3/8 x 4	1	0		
2	ph	R 3/8 x 4	0	6		
1	pk	R 3/8 x 4	0	9		
16	ma	BOLT				
2	6B1A	CHANNEL				
2		C12x20.7	8	2 1/2		
4	aa	L3 x 3 x 3/8	0	5 1/2		
2	ab	L1 1/2 x 1 1/2 x 1/4	7	10 1/2		
ONE	6B2A	CHANNEL				
1		C10x15.3	8	11 3/4		
2	pm	R 3/8 x 4	0	6		

FIELD BOLTS

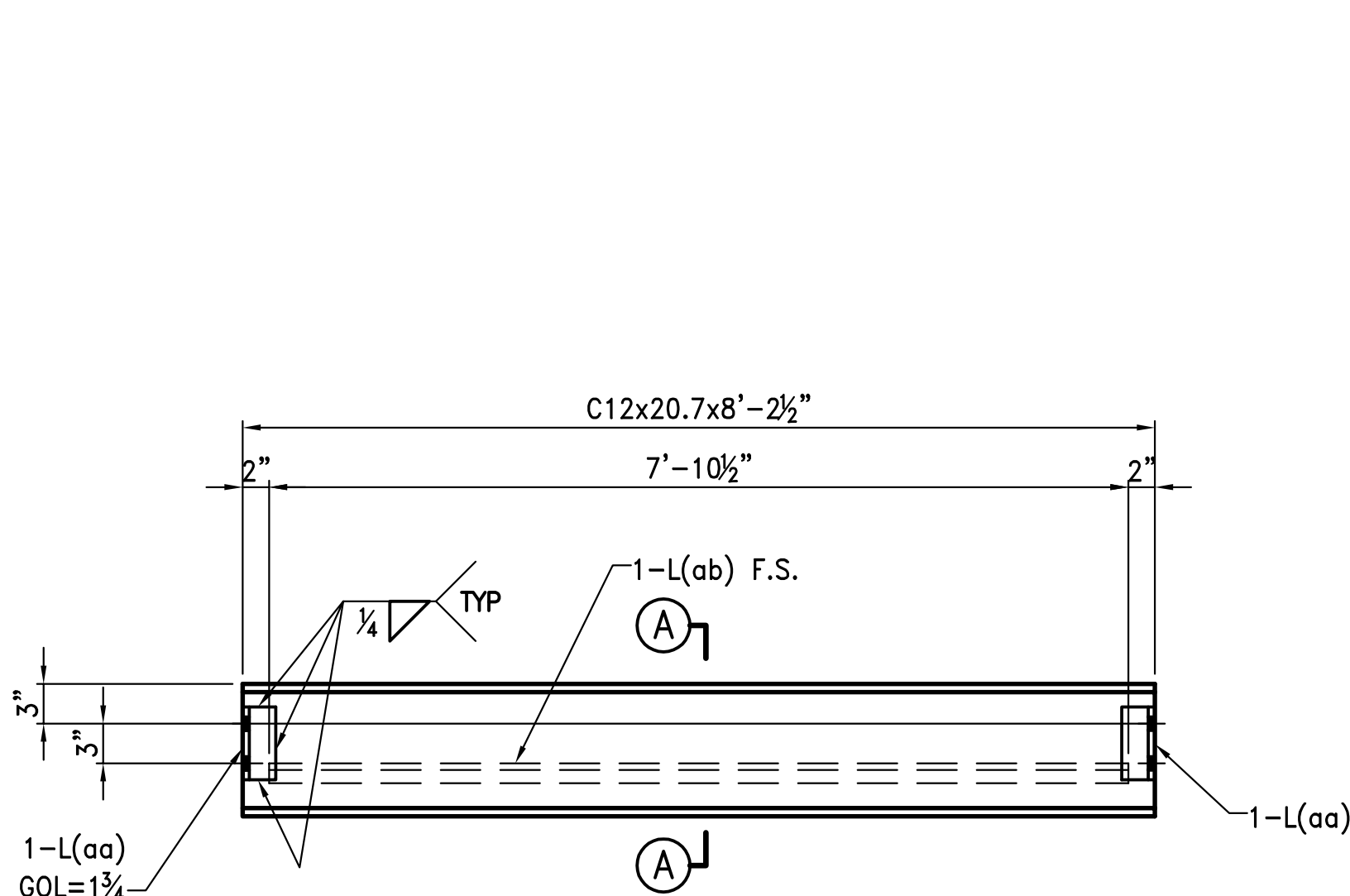
- 4 - 7/8" x 2 A325 BOLT w/H.H. NUT & WA.
- 96 - 3/4" x 2 A325 BOLT w/H.H. NUT & WA.



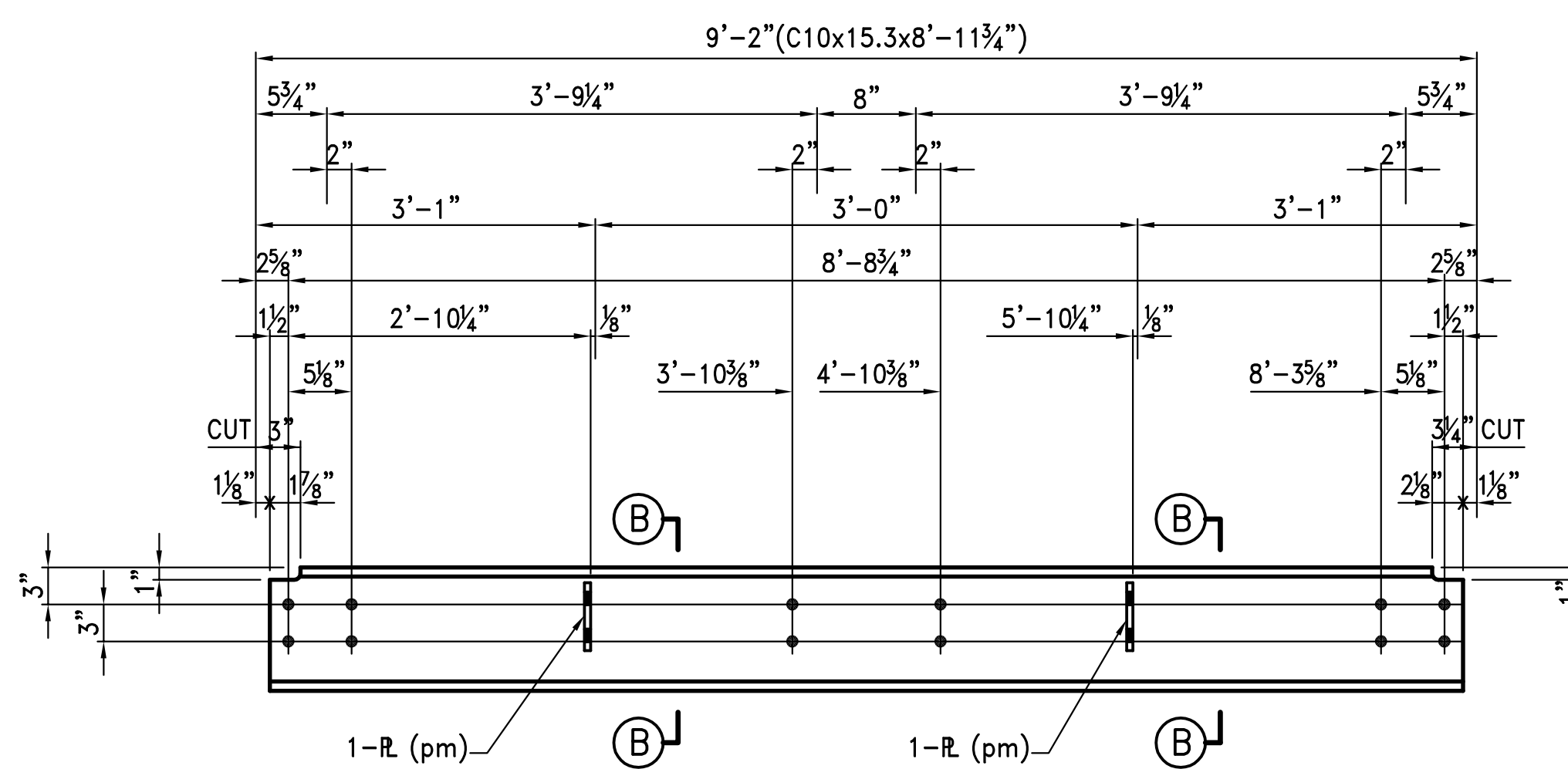
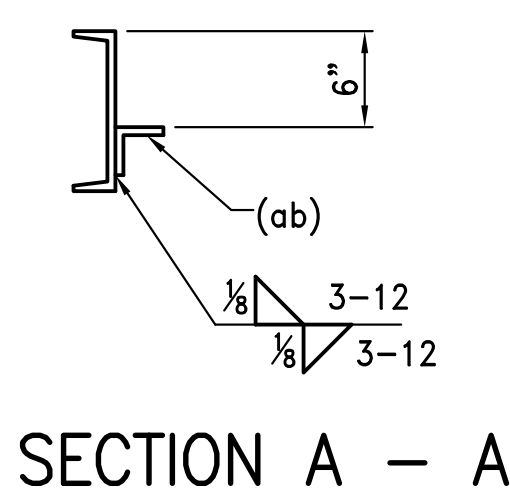
2 - COLUMN - 6C1A



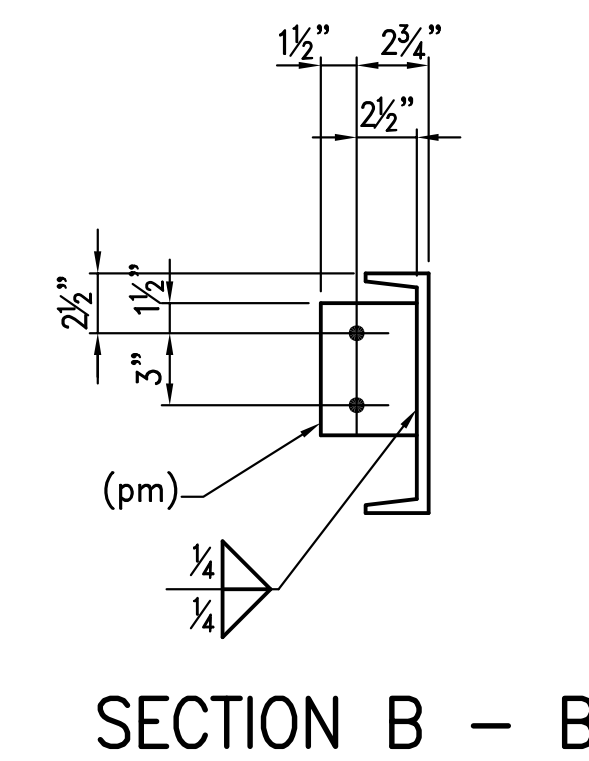
ONE - COLUMN - 6C2A



2 - CHANNEL - 6B1A



ONE - CHANNEL - 6B2A



4					
3					
2					
1					
REV	DESCRIPTION	DATE	SHOP NOTES	PROJECT	DRAWING NO.
			MAT'L A36 U.N. OPEN H.S. 13/16" U.N. WELDING E70XX PAINT 1 S/C PRIMER	WILSON IRON WORKS, INC. 1150 EAST SUMMIT ST. CROWN POINT, IN (219) 663-7900 - 769-8686	6