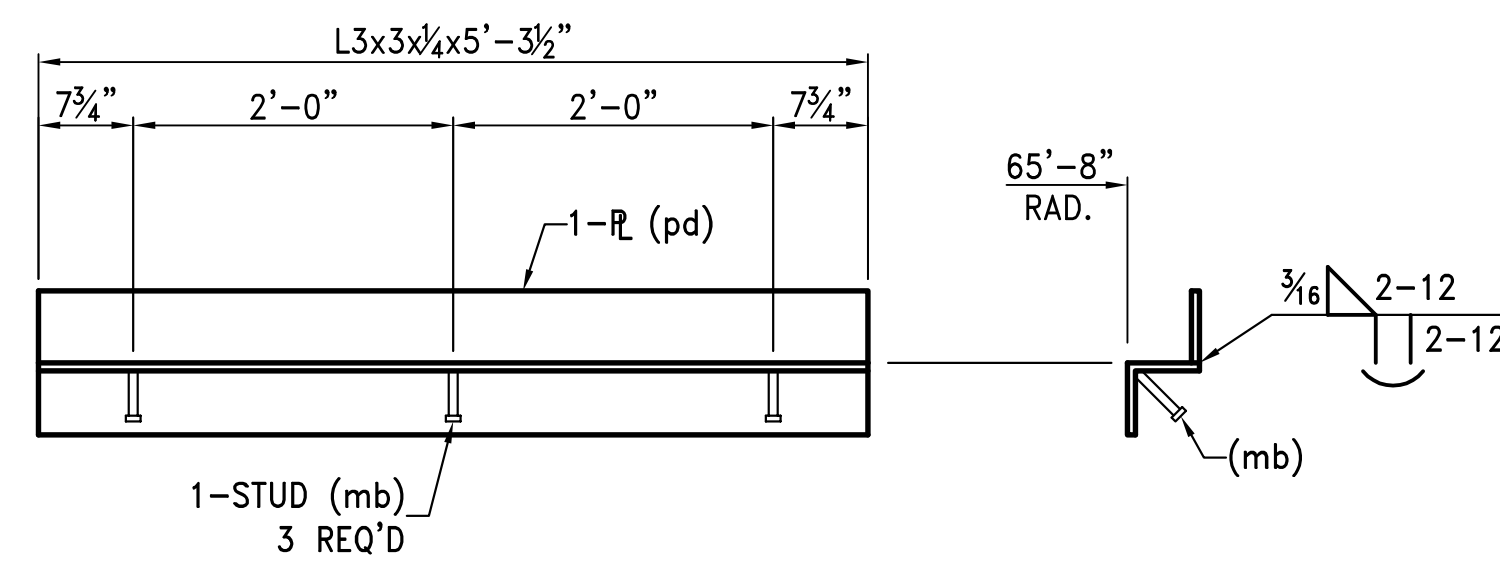
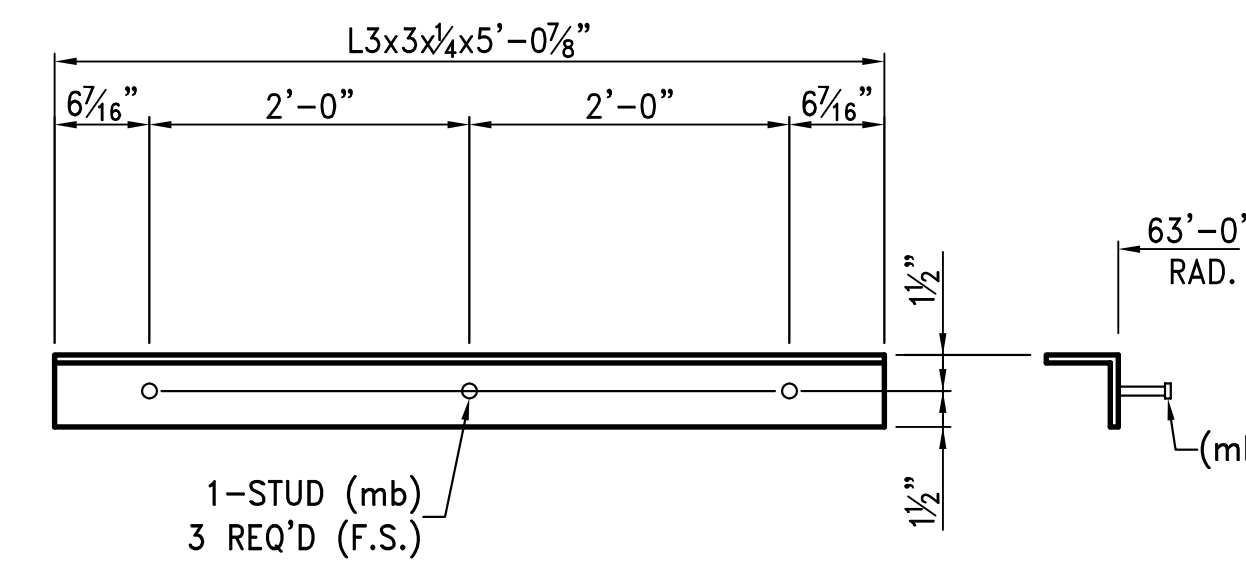


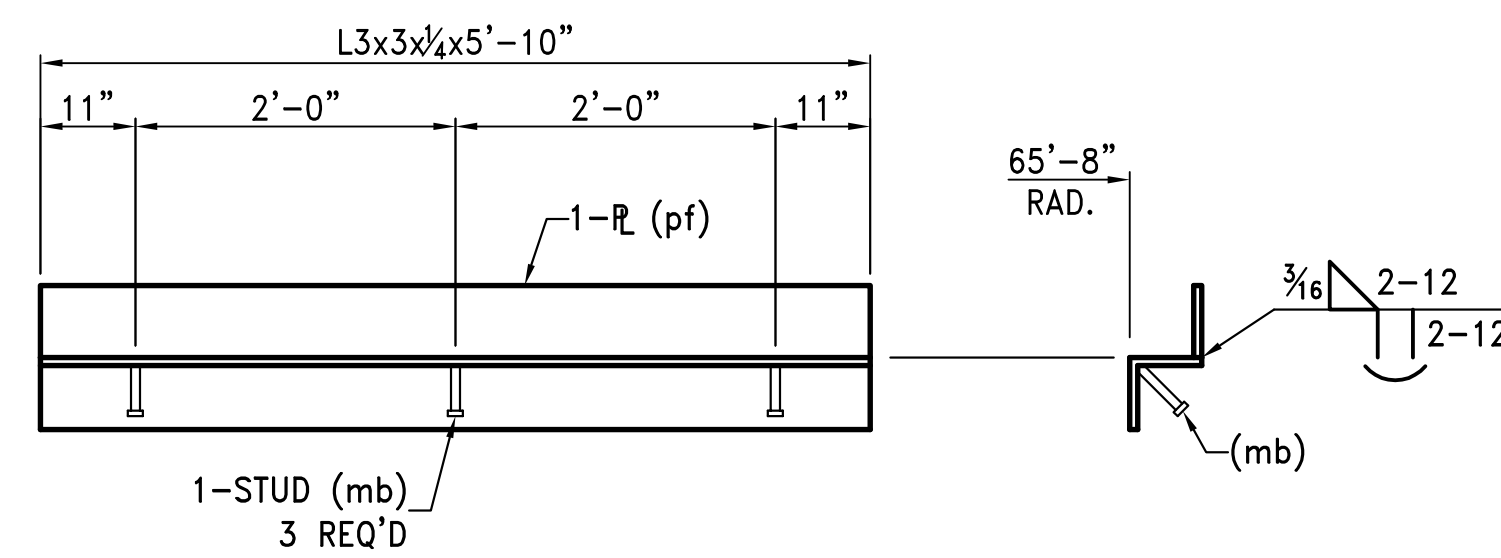
14 - BEARING PLATE - 2BP1



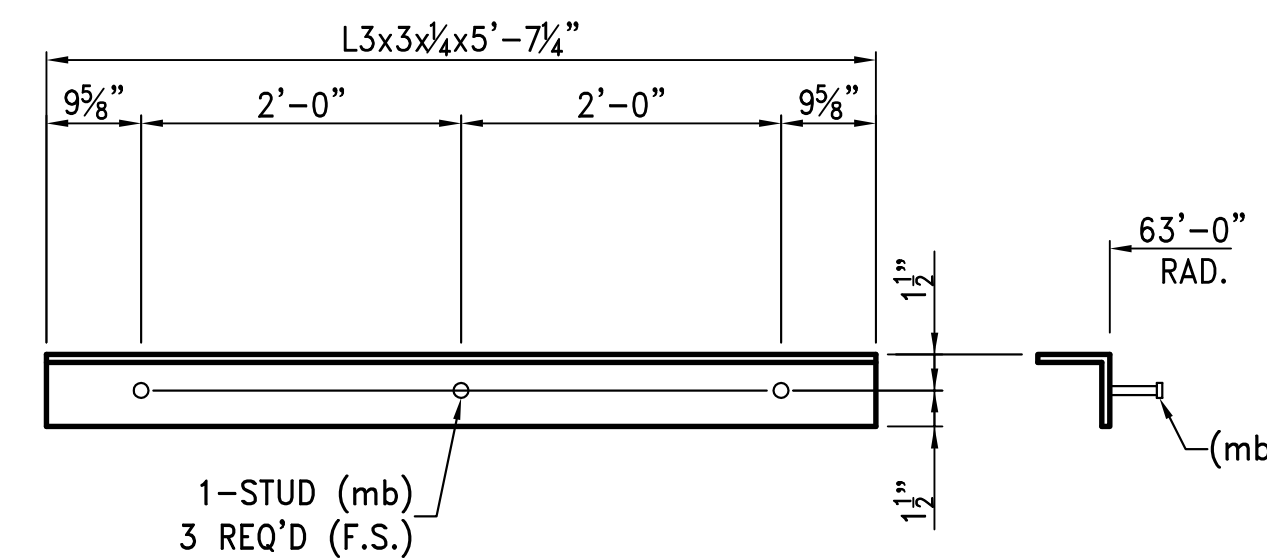
ONE - ANGLE - 2A1



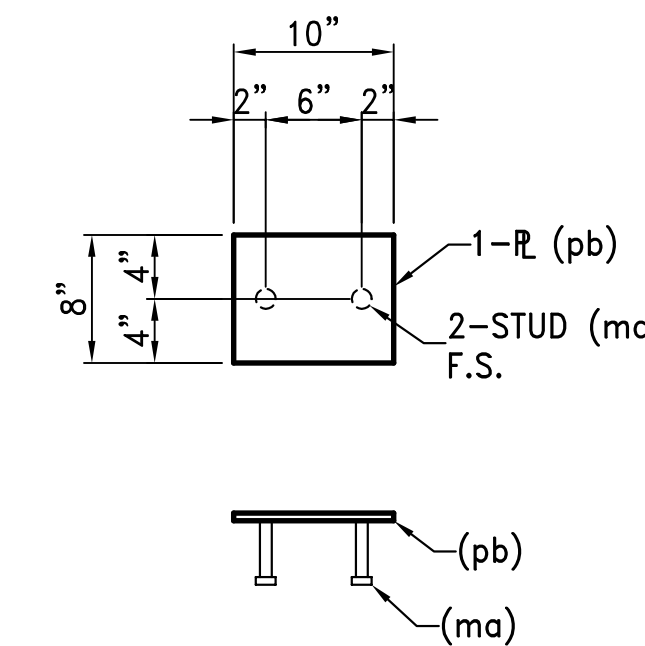
ONE - ANGLE - 2A2



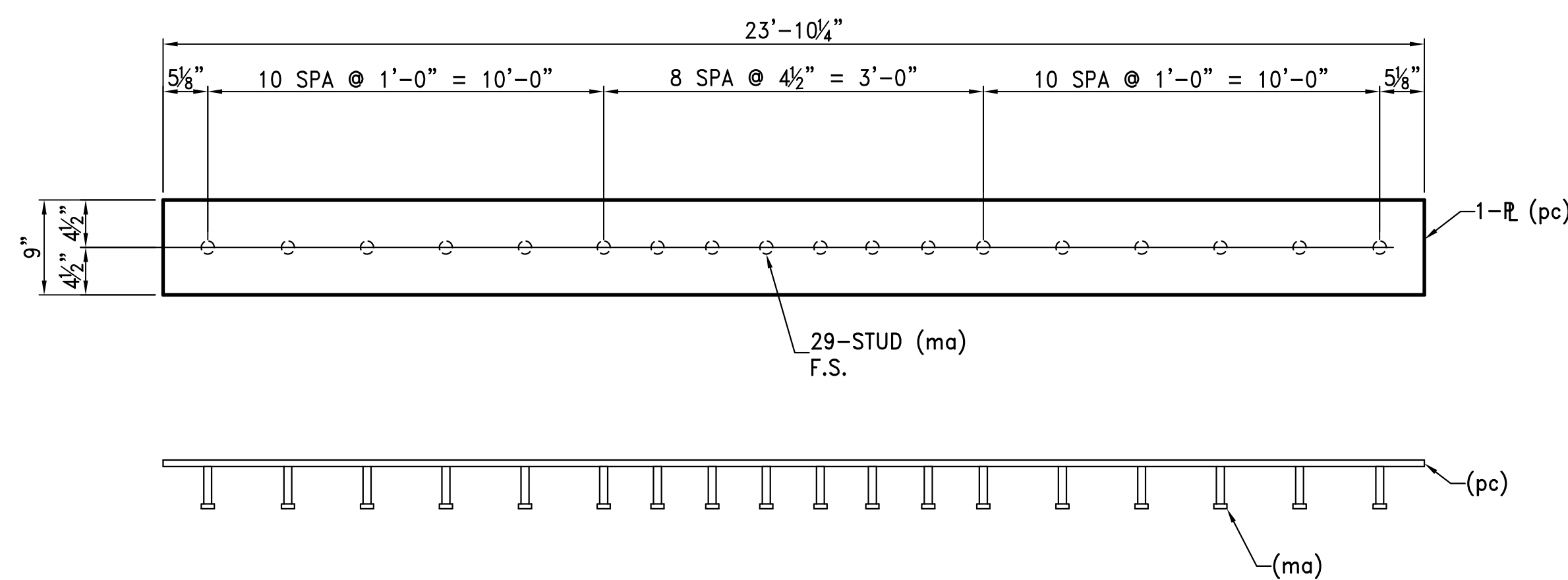
ONE - ANGLE - 2A3



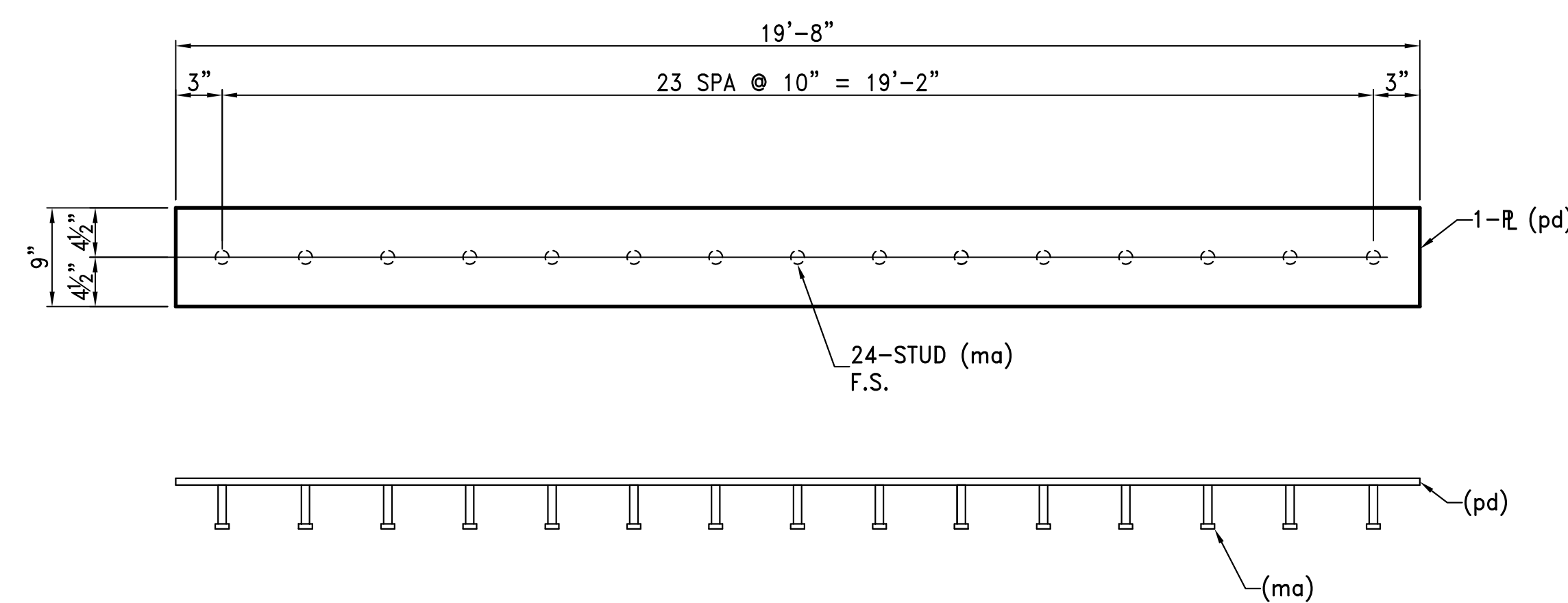
ONE - ANGLE - 2A4



7 - BEARING PLATE - 2BP2



2 - BEARING PLATE - 2BP3

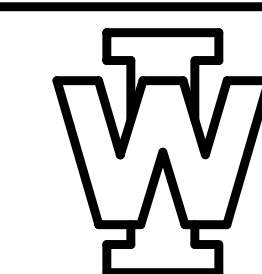


2 - BEARING PLATE - 2BP4

W BILL OF MATERIAL

NO REQ'D	MARK NO	DESCRIPTION	LENGTH		REMARKS	SAW CUT
			FT	IN		
14	2BP1	BEARING PLATE				
14	pa	R 1/4 x 6	0	8		
28	ma	3/4# x 4 HD STUD				
ONE	2A1	ANGLE				
1		L3 x 3 x 1/4	5	3 1/2	ROLL	
3	mb	1/2# x 3 HD STUD				
1	pd	R 1/4 x 2	5	3 3/4		
ONE	2A2	ANGLE				
1		L3 x 3 x 1/4	5	0 7/8	ROLL	
3	mb	STUD				
ONE	2A3	ANGLE				
1		L3 x 3 x 1/4	5	10	ROLL	
3	mb	STUD				
1	pf	R 1/4 x 2	5	10 3/8		
ONE	2A4	ANGLE				
1		L3 x 3 x 1/4	5	7 1/4	ROLL	
3	mb	STUD				
7	2BP2	BEARING PLATE				
7	pb	R 1/4 x 8	0	10		
14	ma	STUD				
2	2BP3	BEARING PLATE				
2	pc	R 5/8 x 9	23	10 1/4		
58	ma	STUD				
2	2BP4	BEARING PLATE				
2	pd	R 5/8 x 9	19	8		
48	ma	STUD				

REF. DWG. AB-3



WILSON IRON WORKS, INC.
1150 EAST SUMMIT ST.
CROWN POINT, IN
(219) 663-7900 - 769-8686

4		
3		
2		
1	REVISED PER ADDENDUM #3	1-25-07
REV	DESCRIPTION	DATE

SHOP NOTES	PROJECT	CENTIER BANK NEW CORPORATE OFFICE BLDG	
MAT'L A36 U.N.		MERRILLVILLE, IN	
OPEN HLS. 13/16" U.N.	G.C.	BERGLUND CONSTRUCTION	
WELDING E70XX	JOB NO.	DRAWN BY	RAV
PAINT NO PAINT	S07001	DATE	01/08/07
		CHK'D BY	CS
		DRAWING NO.	2