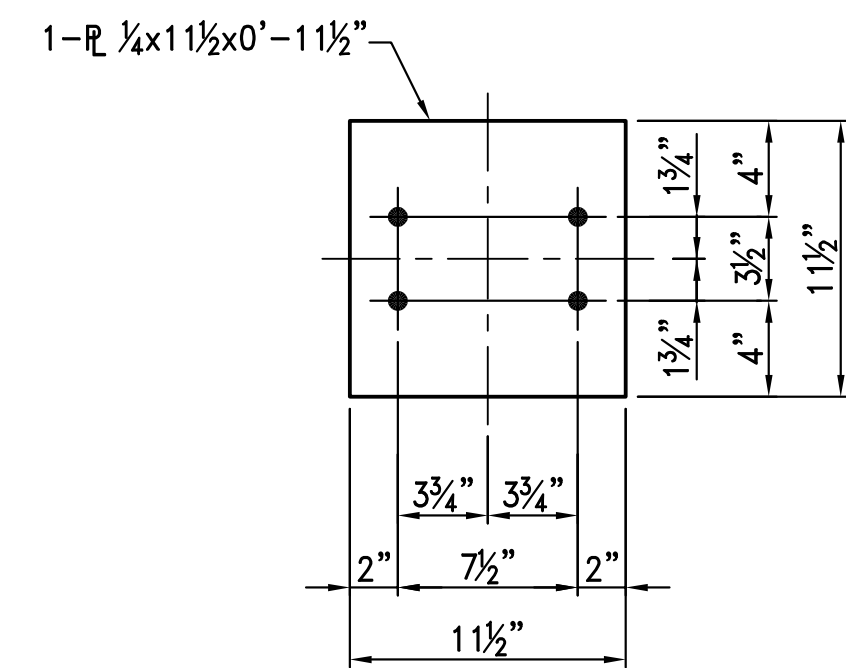
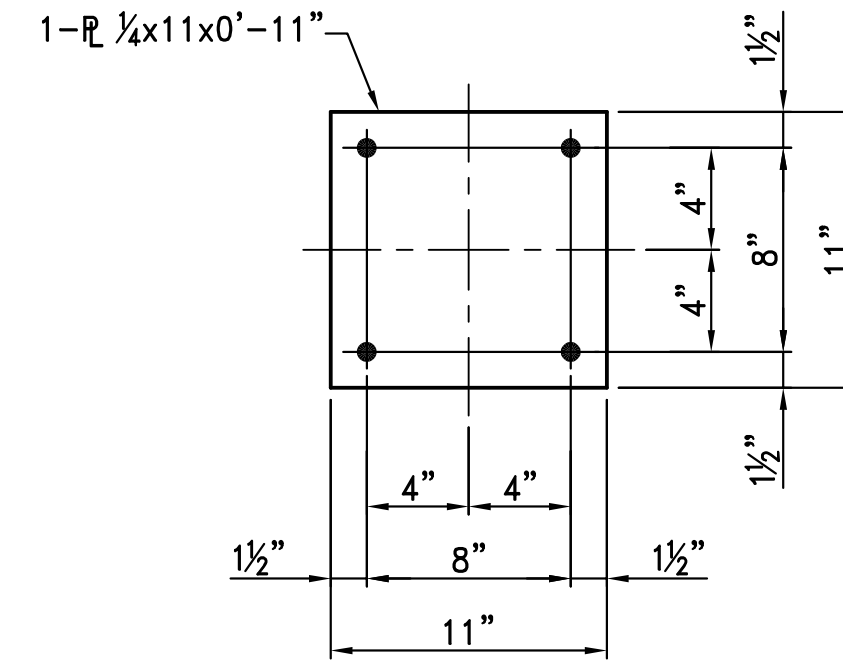


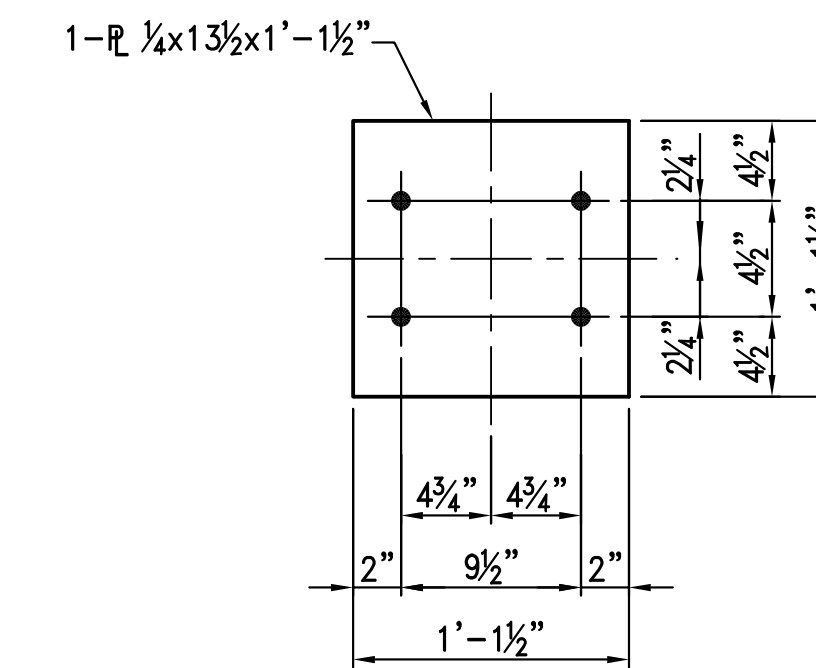
244 - ANCHOR BOLT - 1AB1
(NO PAINT)



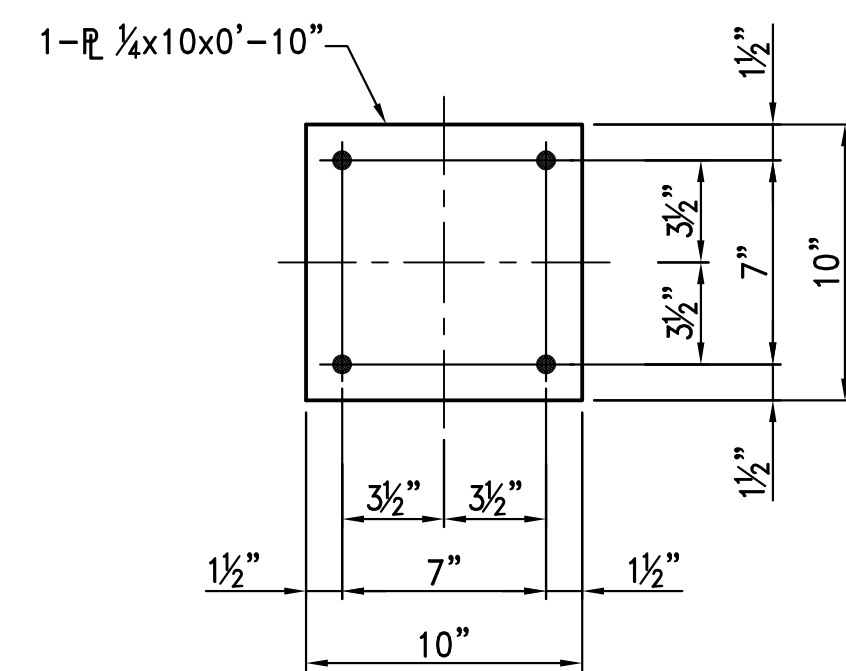
27 - SETTING PLATE - 1SP1
(NO PAINT)



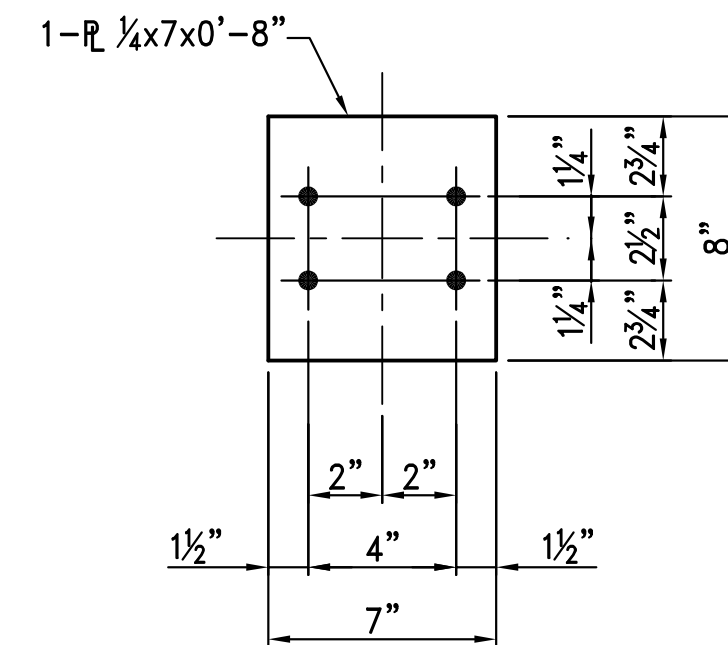
4 - SETTING PLATE - 1SP2
(NO PAINT)



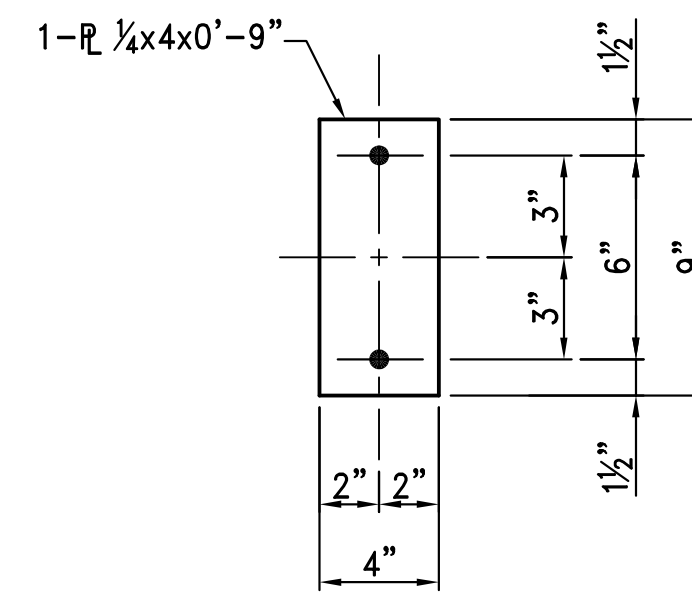
4 - SETTING PLATE - 1SP3
(NO PAINT)



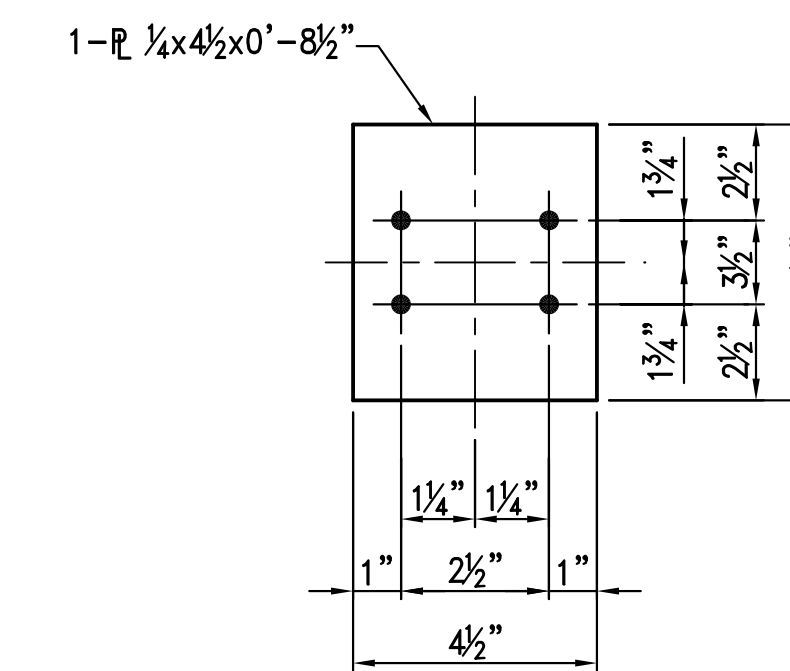
2 - SETTING PLATE - 1SP4
(NO PAINT)



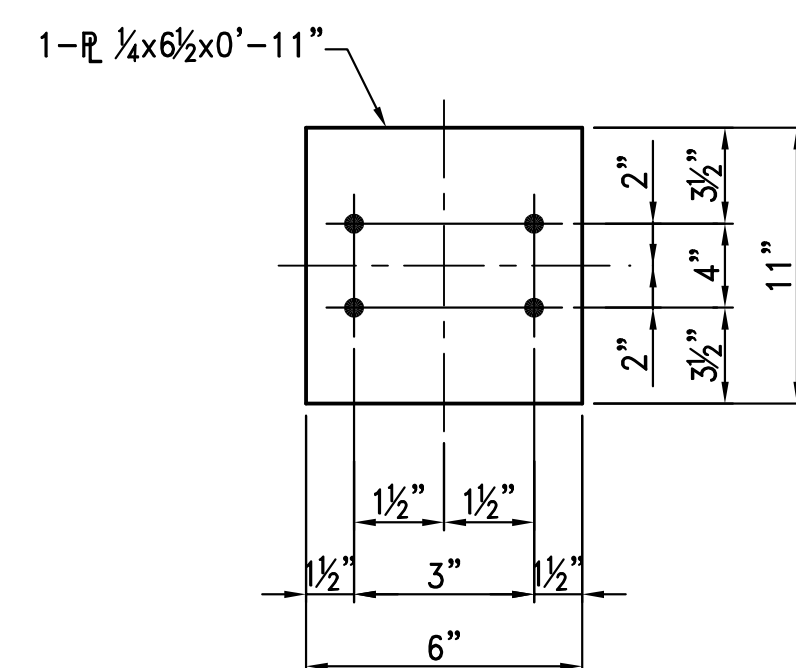
4 - SETTING PLATE - 1SP5
(NO PAINT)



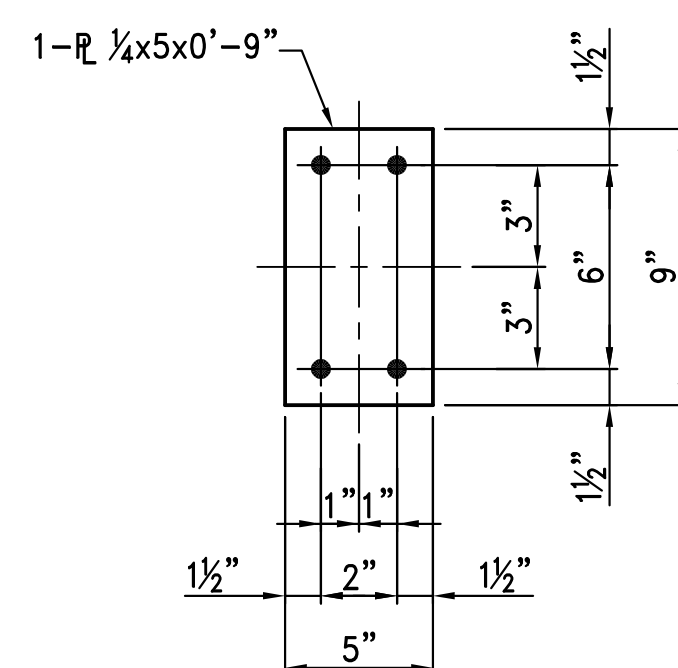
4 - SETTING PLATE - 1SP6
(NO PAINT)



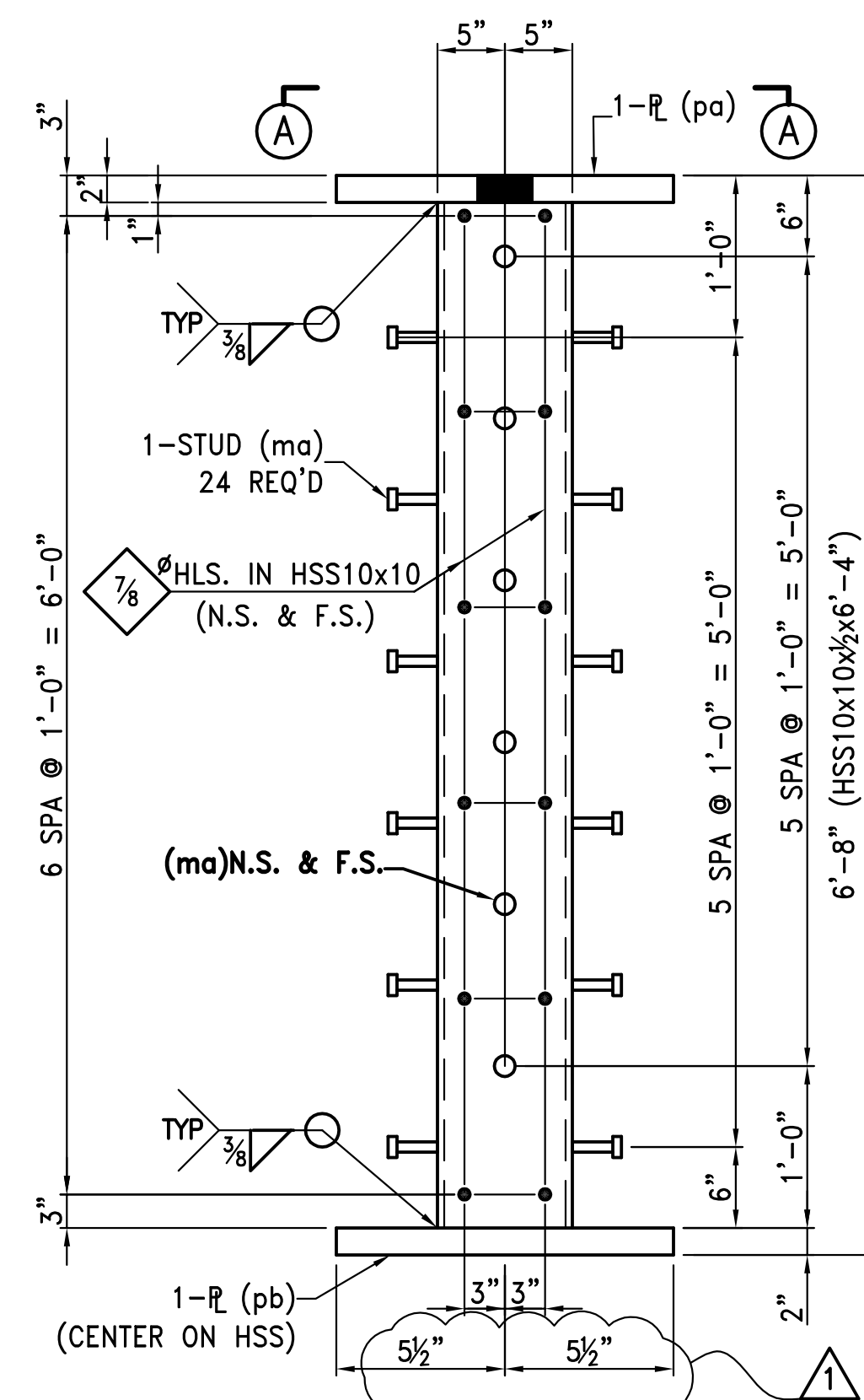
10 - SETTING PLATE - 1SP7
(NO PAINT)



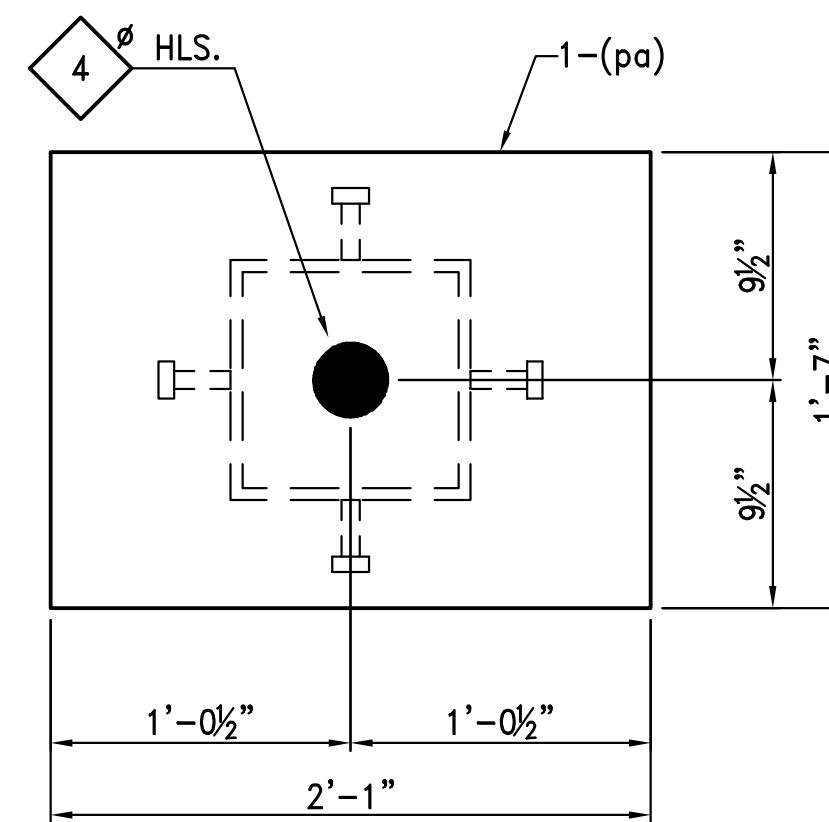
6 - SETTING PLATE - 1SP8
(NO PAINT)



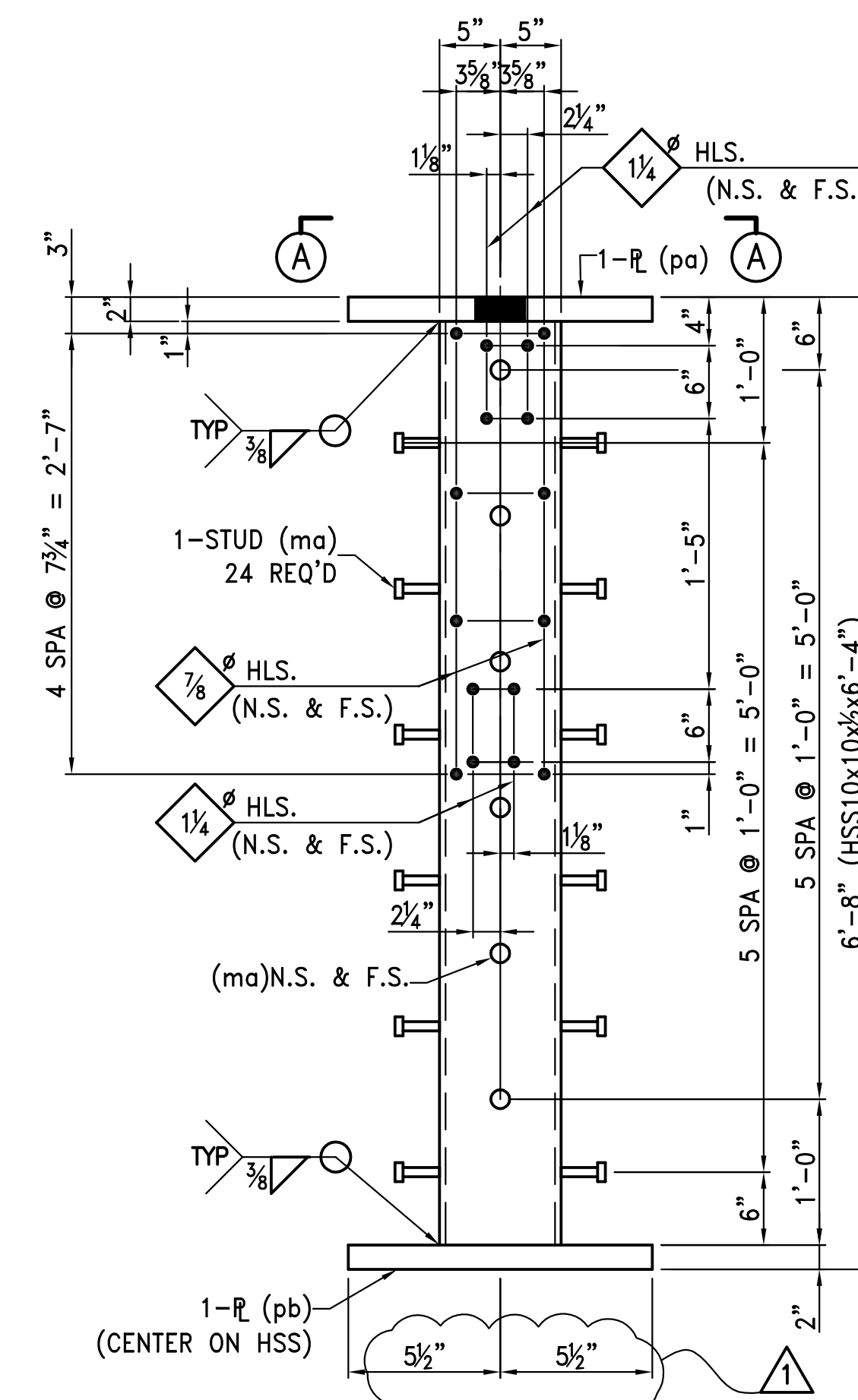
2 - SETTING PLATE - 1SP9
(NO PAINT)



2 - COLUMN ANCHORAGE - 1CA1
(NO PAINT)



SECTION A-A

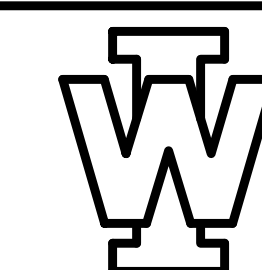


2 - COLUMN ANCHORAGE - 1CA2
(NO PAINT)

W BILL OF MATERIAL

NO REQ'D	MARK NO	DESCRIPTION	LENGTH		REMARKS	SAW CUT
			FT	IN		
244	1AB1	ANCHOR BOLT				
244		ROD 3/4"	1	5 1/2		
244		3/4" H. NUT				
244		3/4" FLT. WA.				
27	1SP1	SETTING PLATE				
27		PL 1/4 x 11 1/2	0	11 1/2		
4	1SP2	SETTING PLATE				
4		PL 1/4 x 11	0	11		
4	1SP3	SETTING PLATE				
4		PL 1/4 x 13 1/2	1	1 1/2		
2	1SP4	SETTING PLATE				
2		PL 1/4 x 10	0	10		
4	1SP5	SETTING PLATE				
4		PL 1/4 x 7	0	8		
4	1SP6	SETTING PLATE				
4		PL 1/4 x 4	0	9		
10	1SP7	SETTING PLATE				
10		PL 1/4 x 4 1/2	0	8 1/2		
6	1SP8	SETTING PLATE				
6		PL 1/4 x 6 1/2	0	11		
2	1CA1	COLUMN ANCHORAGE				
2		HSS10 x 10 x 1/2	6	4	A500 GR B	
48	ma	3/4" x 3 HD STUD				
2	pa	PL 2 x 19	2	1		
2	pb	PL 2 x 11	0	11		
2	1CA2	COLUMN ANCHORAGE				
2		HSS10 x 10 x 1/2	6	4	A500 GR B	
48	ma	STUD				
2	pa	PL				
2	pb	PL				
2	1SP9	SETTING PLATE				
2		PL 1/4 x 5	0	9		

REF. DWG. AB-1 & AB-2



WILSON IRON WORKS, INC.
1150 EAST SUMMIT ST.
CROWN POINT, IN
(219) 663-7900 - 769-8686

NO	REV	DESCRIPTION	DATE	WELDING	PAINT	SHOP NOTES	PROJECT	JOB NO.	DRAWN BY	DATE	DRAWING NO.
4							CENTIER BANK NEW CORPORATE OFFICE BLDG. MERRILLVILLE, IN G.C. BERGLUND CONSTRUCTION	S07001	RAV	12/30/06	1
3											
2											
1	REV	1CA1 & 1CA2	3/29/07	E70XX	NO PAINT						
REV		DESCRIPTION	DATE	WELDING	PAINT	SHOP NOTES	PROJECT	JOB NO.	DRAWN BY	DATE	DRAWING NO.